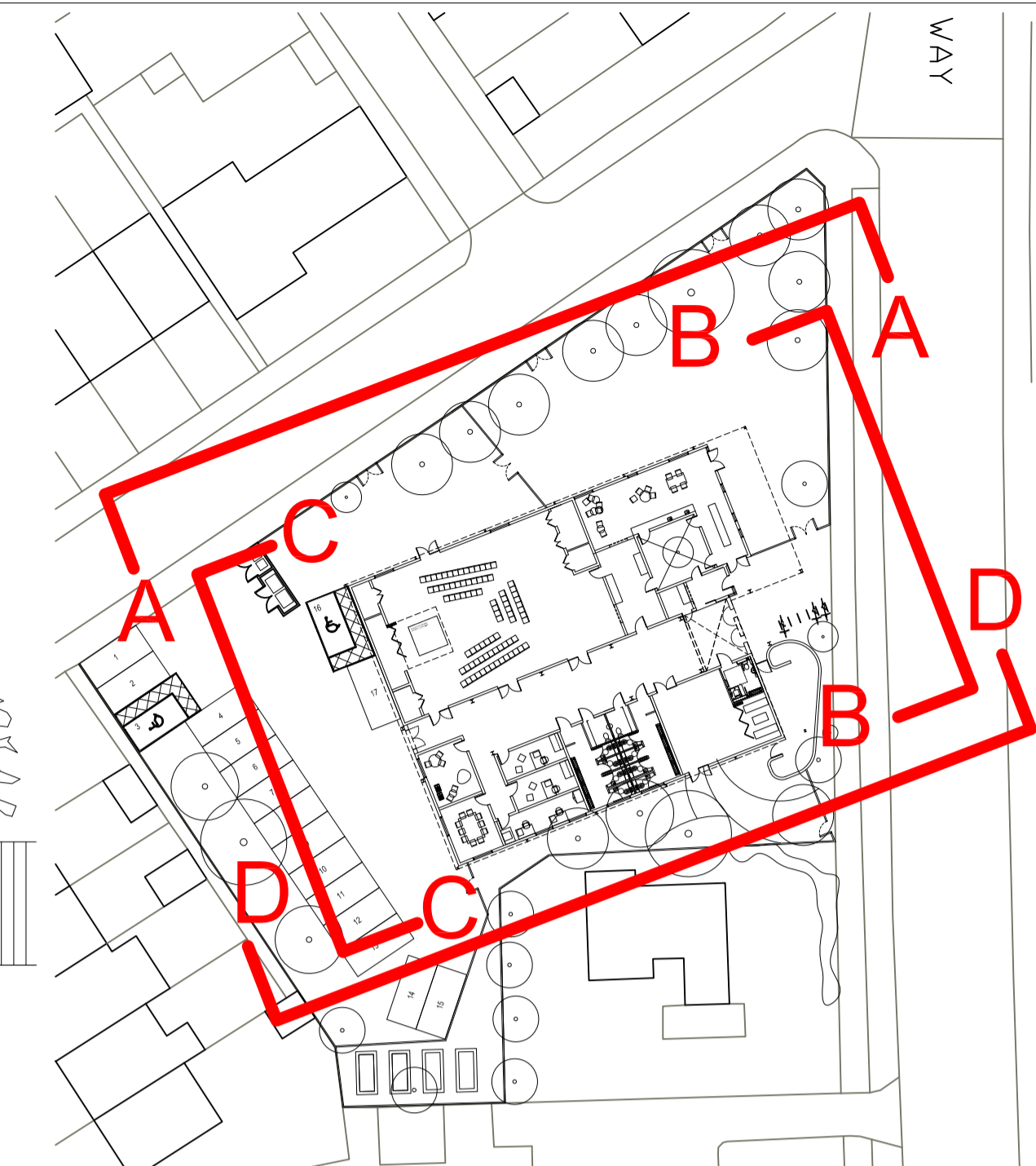
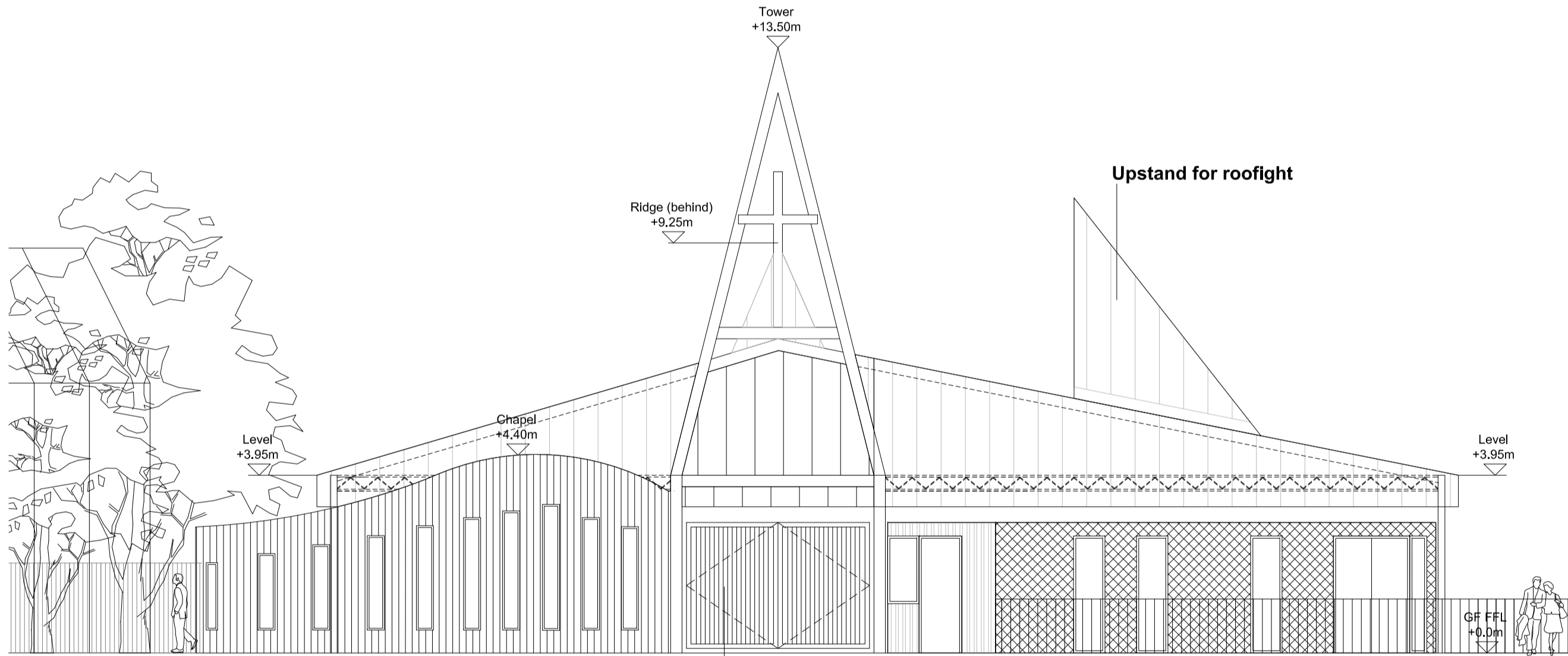


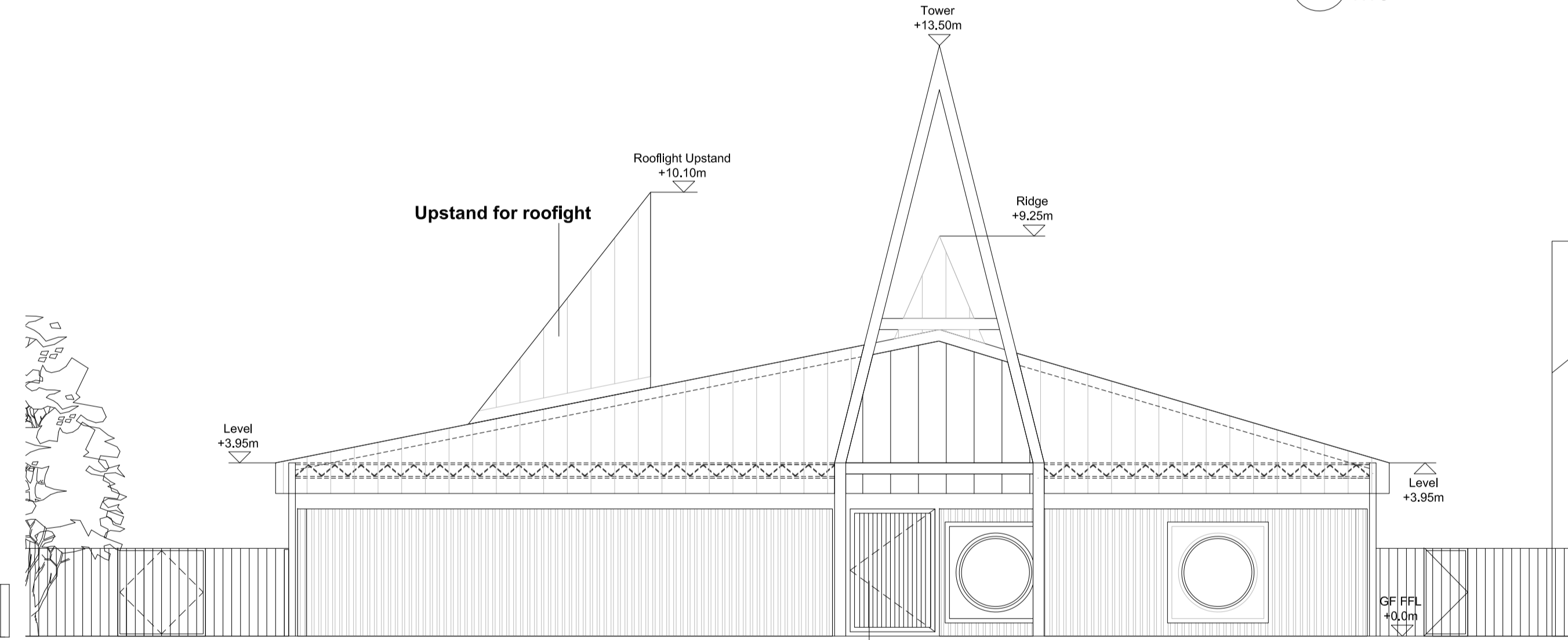
**E 01 North Elevation AA**  
Scale 1:100 @ A1, 1:200 @A3



**P 01 Key Plan**  
NTS

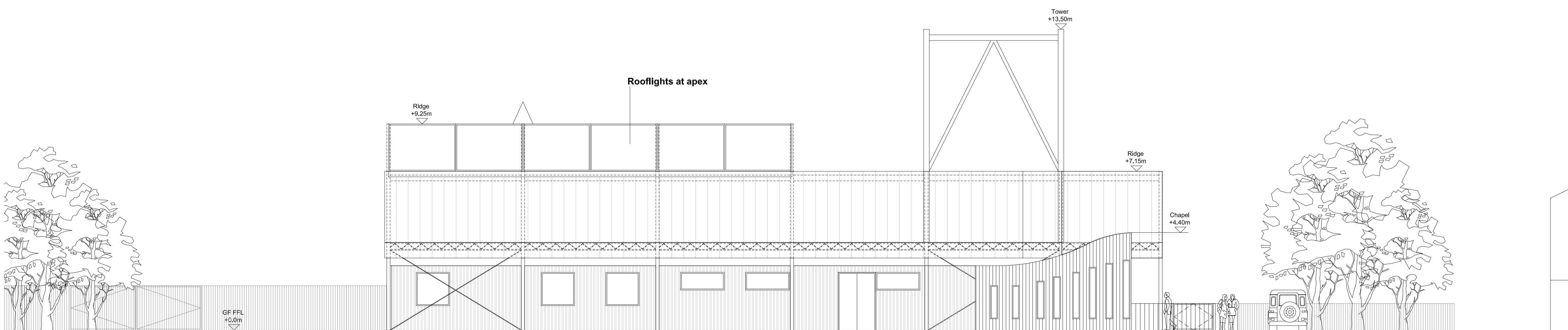
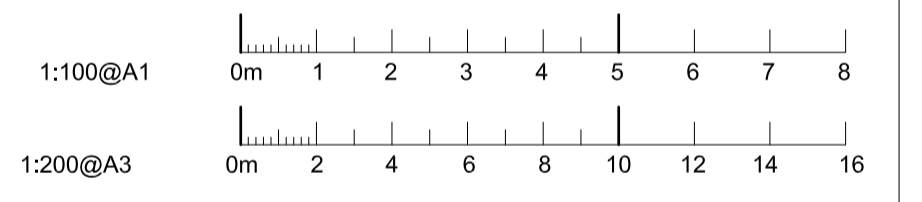


**E 02 East Elevation BB**  
Scale 1:100 @ A1, 1:200 @A3



**E 03 West Elevation BB**  
Scale 1:100 @ A1, 1:200 @A3

- Timber cladding to chapel
- Painted profiled metal shipping container
- Diamond pattern fibre cement cladding
- Clear polycarbonate cladding
- Zinc roof covering



**E 04 South Elevation DD**  
Scale 1:100 @ A1, 1:200 @A3

**NOTES**

Revisions		
P4	16/11/20	Issued for planning approval
P3	21/10/20	Issued for planning approval
P2	17/09/20	Issued for planning approval
P1	21/07/20	Issued for planning approval

FOR PLANNING		
Do not scale from this drawing. Confirm all dimensions on site.		
<b>Cottrell and Vermeulen Architecture</b> 18 Birnie Street, London SE11 3LJ, 020 7788 2987		
<b>DWG 0422</b>	<b>PL 10</b>	<b>04</b>
Filename: 0422-PL-ELE.dwg		
Saint Stephen's Church, Westcliff on Sea		
Proposed Elevations Scale 1:100 @ A1, 1:200@A3 Drawn by LA	Date: 19 Feb 2020 Revision: P1 Checked by PT	